



sarens

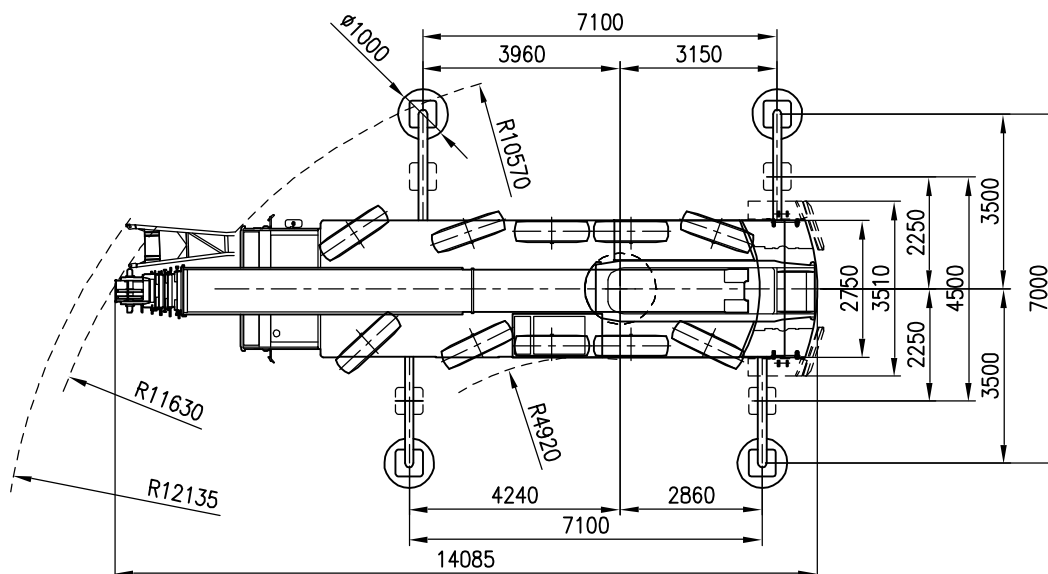
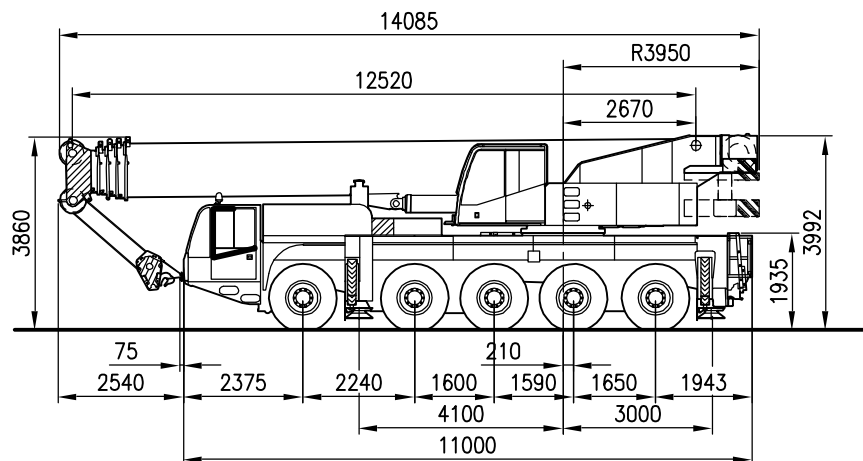
polska

MENU GŁÓWNE

DEMAG AC 100

100/110 TON

1/150



Axle load / Charge par essieu / Achslast / Aslast
 Total weight / Poids total / Gesamtgewicht / Totaal gewicht
 Tyres / Pneus / Bereifung / Banden

: 5 x 12 t
 : 60 t
 : 16.00 R 25

(13.3 t)
 (13.3 t)



DEMAG AC 100

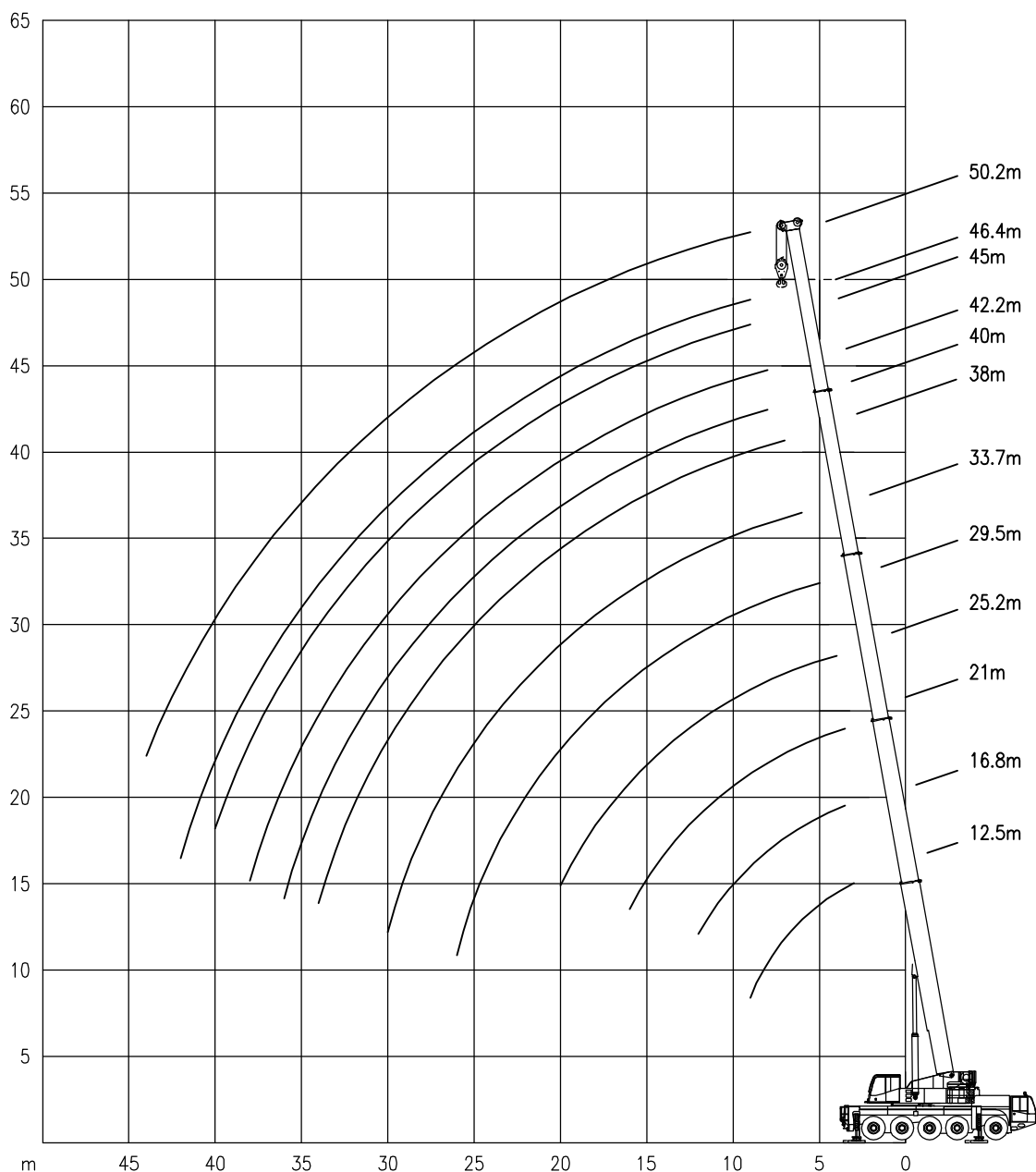
100/110 TON

Working ranges of main boom
Portées de la flèche principale

Arbeitsbereiche mit Hauptausleger
Werkbereich van de hoofdgiek

Ha

1/400





DEMAG AC 100

100/110 TON

Lifting capacities at main boom
Capacités à la flèche principale

Tragfähigkeiten am Hauptausleger
Capaciteiten aan de hoofdgiëk



7.1 m x 7 m

25 t

Ha

360°

DIN/ISO 75 %

		Main Boom – Flèche principale – Hauptausleger – Hoofdgiëk											
Radius		12.5 m	16.8 m	21 m	25.2 m	29.5 m	33.7 m	38 m	40.8 m	42.2 m	45 m	46.4 m	50.2 m
Ausladung													
Radius	m												
	t	t	t	t	t	t	t	t	t	t	t	t	t
3	85.5/100*	-	-	-	-	-	-	-	-	-	-	-	-
3.5	79.2	76.2	73	-	-	-	-	-	-	-	-	-	-
4	73.7	70.8	68.3	53	-	-	-	-	-	-	-	-	-
4.5	68.8	66.2	63.8	50.4	-	-	-	-	-	-	-	-	-
5	64.2	62.2	59.8	47.9	41.7	-	-	-	-	-	-	-	-
6	56.2	55.3	53.1	43.5	39.5	33.9	-	-	-	-	-	-	-
7	49	49.1	47.8	39.7	36.6	30.9	27.5	-	-	-	-	-	-
8	42	42.1	41.6	36.5	34.1	28.4	25.5	16	21	-	-	-	-
9	36.5	36.6	35.9	33.7	31.9	26.2	23.6	16	20.5	13	15.4	13	-
10	-	30.7	30.1	30.3	30	24.2	22	16	19.8	13	15.1	12.5	-
12	-	22.9	23.5	23.5	23.4	20.9	19.2	14.3	18.1	13	14.5	12	-
14	-	-	18.5	18.8	18.3	18	16.9	12.7	16.2	12.3	13.9	11.5	-
16	-	-	15	15.4	15.1	14.5	14.6	11.5	14.4	11.3	13.2	11	-
18	-	-	-	12.8	13.3	12	12	10.4	12.5	10.4	12.1	10.5	-
20	-	-	-	10.9	11.3	11	10.5	9.5	11.2	9.5	10.8	10	-
22	-	-	-	-	9.8	9.9	9.6	8.7	9.6	8.7	9.3	9.2	-
24	-	-	-	-	8.5	8.6	8.7	8.1	8.4	8	8	8.1	-
26	-	-	-	-	7.5	7.6	7.7	7.5	7.3	7.4	7	7.1	-
28	-	-	-	-	-	6.7	6.8	6.8	6.4	6.5	6.1	6.2	-
30	-	-	-	-	-	6	6.1	6.1	5.7	5.8	5.3	5.4	-
32	-	-	-	-	-	-	5.4	5.4	5	5.1	4.6	4.7	-
34	-	-	-	-	-	-	4.8	4.8	4.4	4.5	4	4.1	-
36	-	-	-	-	-	-	-	4.3	3.9	4	3.5	3.6	-
38	-	-	-	-	-	-	-	-	3.5	3.5	3.1	3.1	-
40	-	-	-	-	-	-	-	-	-	3.1	2.6	2.7	-
42	-	-	-	-	-	-	-	-	-	-	2.3	2.3	-
44	-	-	-	-	-	-	-	-	-	-	-	2	-
46	-	-	-	-	-	-	-	-	-	-	-	1.7	-



7.1 m x 7 m

13.3 t

Ha

360°

DIN/ISO 75 %

		Main Boom – Flèche principale – Hauptausleger – Hoofdgiëk											
Radius		12.5 m	16.8 m	21m	25.2 m	29.5 m	33.7 m	38 m	40.8 m	42.2 m	45 m	46.4 m	50.2 m
Ausladung													
Radius	m												
	t	t	t	t	t	t	t	t	t	t	t	t	t
3	85.5/100*	-	-	-	-	-	-	-	-	-	-	-	-
3.5	79.2	76.2	73	-	-	-	-	-	-	-	-	-	-
4	73.7	70.8	68.3	53	-	-	-	-	-	-	-	-	-
4.5	68.2	66.2	63.8	50.4	-	-	-	-	-	-	-	-	-
5	63.4	62.2	59.8	47.9	41.7	-	-	-	-	-	-	-	-
6	52.1	52.3	48.6	43.5	39.5	33.9	-	-	-	-	-	-	-
7	42.7	42.7	39	36.8	35.8	30.9	27.5	-	-	-	-	-	-
8	33.2	33.4	33.9	32.3	30.2	28.2	25.5	16	21	-	-	-	-
9	27	27	27.8	27.9	25.9	24.3	23.3	16	20.5	13	15.4	13	-
10	-	22.5	23.2	23.6	22.6	21.2	20.3	16	19.8	13	15.1	12.5	-
12	-	16.6	17.1	17.5	18.1	16.4	15.9	14.3	16.2	13	14.5	12	-
14	-	-	13.1	13.5	14.1	14.2	14.3	12.7	13.6	12.3	12.8	11.5	-
16	-	-	10.4	10.7	11.3	11.4	11.5	11.5	11.1	11.2	10.6	10.3	-
18	-	-	-	8.7	9.2	9.3	9.5	9.5	9.1	9.2	8.7	8.7	-
20	-	-	-	7.2	7.7	7.8	7.9	8	7.5	7.7	7.2	7.2	-
22	-	-	-	-	6.5	6.6	6.7	6.7	6.3	6.4	5.9	6	-
24	-	-	-	-	5.5	5.6	5.7	5.7	5.3	5.4	4.9	5	-
26	-	-	-	-	4.7	4.7	4.8	4.9	4.4	4.5	4	4.1	-
28	-	-	-	-	-	4	4.1	4.2	3.7	3.8	3.3	3.4	-
30	-	-	-	-	-	3.4	3.5	3.6	3.1	3.2	2.7	2.8	-
32	-	-	-	-	-	-	3	3	2.6	2.7	2.2	2.3	-
34	-	-	-	-	-	-	2.5	2.5	2.1	2.2	1.8	1.9	-
36	-	-	-	-	-	-	-	2.1	1.7	1.9	1.4	1.5	-
38	-	-	-	-	-	-	-	-	1.3	1.5	1.1	1.1	-
40	-	-	-	-	-	-	-	-	-	1.1	0.7	0.7	-

* : Over rear / En arrière / Nach hinten / Over achterzijde



DEMAG AC 100

100/110 TON

Lifting capacities at main boom
Capacités à la flèche principale

Tragfähigkeiten am Hauptausleger
Capaciteiten aan de hoofdgiëk



7.1 m x 4.5 m 25 t

Ha 360° DIN/ISO 75 %

Main Boom – Flèche principale – Hauptausleger – Hoofdgiëk												
Radius	12.5 m	16.8 m	21 m	25.2 m	29.5 m	33.7 m	38 m	40.8 m	42.2 m	45 m	46.4 m	50.2 m
Portée	m	m	m	m	m	m	m	m	m	m	m	m
Ausladung	t	t	t	t	t	t	t	t	t	t	t	t
3	78.9	-	-	-	-	-	-	-	-	-	-	-
3.5	71.2	71.3	70.9	-	-	-	-	-	-	-	-	-
4	64.8	64.9	63.7	53	-	-	-	-	-	-	-	-
4.5	59.4	59.5	54.9	50.4	-	-	-	-	-	-	-	-
5	53.7	53.1	48.1	44.7	41.7	-	-	-	-	-	-	-
6	38.3	38.4	39.2	37.8	34.8	32.4	-	-	-	-	-	-
7	29.3	29.4	30.1	30.6	29.2	27.2	25.9	-	-	-	-	-
8	23.5	23.6	24.2	24.6	24.7	23.3	22.3	16	21	-	-	-
9	19.5	19.5	20.1	20.5	21.1	19.6	19.4	16	19.2	13	15.4	13
10	-	16.5	17	17.4	17.9	17.7	17.8	16	17	13	15.1	12.5
12	-	12.3	12.8	13.1	13.6	13.7	13.8	13.9	13.5	13	13.2	12
14	-	-	10	10.3	10.7	10.8	11	11	10.6	10.7	10.3	10.4
16	-	-	8	8.3	8.7	8.8	8.9	9	8.6	8.7	8.3	8.4
18	-	-	-	6.8	7.2	7.3	7.4	7.5	7.1	7.2	6.8	6.9
20	-	-	-	5.7	6.1	6.1	6.3	6.3	5.9	6	5.7	5.7
22	-	-	-	-	5.2	5.2	5.3	5.4	5	5.1	4.7	4.8
24	-	-	-	-	4.4	4.5	4.6	4.6	4.3	4.4	4	4.1
26	-	-	-	-	3.8	3.8	3.9	4	3.6	3.7	3.4	3.4
28	-	-	-	-	-	3.3	3.4	3.4	3.1	3.2	2.8	2.9
30	-	-	-	-	-	2.9	3	3	2.7	2.8	2.4	2.5
32	-	-	-	-	-	-	2.6	2.6	2.3	2.4	2	2.1
34	-	-	-	-	-	-	2.3	2.3	1.9	2	1.6	1.7
36	-	-	-	-	-	-	-	2	1.6	1.7	1.3	1.3
38	-	-	-	-	-	-	-	-	1.3	1.4	1	1
40	-	-	-	-	-	-	-	-	-	1.1	0.7	0.7



7.1 m x 4.5 m 13.3 t

Ha 360° DIN/ISO 75 %

Main Boom – Flèche principale – Hauptausleger – Hoofdgiëk												
Radius	12.5 m	16.8 m	21m	25.2 m	29.5 m	33.7 m	38 m	40.8 m	42.2 m	45 m	46.4 m	50.2 m
Portée	m	m	m	m	m	m	m	m	m	m	m	m
Ausladung	t	t	t	t	t	t	t	t	t	t	t	t
3	76.2	-	-	-	-	-	-	-	-	-	-	-
3.5	68.8	60.9	53.4	-	-	-	-	-	-	-	-	-
4	58.4	50.4	45.2	40.9	-	-	-	-	-	-	-	-
4.5	47.2	42.8	39	35.8	-	-	-	-	-	-	-	-
5	37.8	37	34.2	31.6	29.8	-	-	-	-	-	-	-
6	26.6	26.8	27.1	25.4	24.4	20.5	-	-	-	-	-	-
7	20.2	20.3	21	21.1	20.4	19.3	18	-	-	-	-	-
8	16	16.1	16.7	17.1	17.4	16.6	15.9	15.4	14.5	-	-	-
9	13	13.1	13.6	14	14.6	14.4	13.9	13.5	12.6	12.4	11.5	11.1
10	-	10.9	11.4	11.8	12.3	12.4	12.2	11.9	11.1	10.9	10.1	9.8
12	-	7.9	8.3	8.6	9.1	9.2	9.4	9.4	8.8	8.7	7.9	7.7
14	-	-	6.3	6.6	7	7.1	7.3	7.3	6.9	7	6.3	6.2
16	-	-	4.9	5.1	5.6	5.6	5.8	5.8	5.4	5.6	5	4.9
18	-	-	-	4.1	4.5	4.5	4.7	4.7	4.3	4.5	4	4
20	-	-	-	3.2	3.6	3.7	3.8	3.8	3.5	3.6	3.2	3.2
22	-	-	-	-	3	3	3.1	3.2	2.8	2.9	2.5	2.4
24	-	-	-	-	2.4	2.5	2.6	2.6	2.3	2.4	1.9	1.9
26	-	-	-	-	2	2	2.1	2.1	1.8	1.9	1.4	1.4
28	-	-	-	-	-	1.6	1.7	1.8	1.3	1.4	1	1
30	-	-	-	-	-	1.2	1.3	1.4	0.9	1	-	0.6
32	-	-	-	-	-	-	1	1	-	0.7	-	-
34	-	-	-	-	-	-	0.7	0.7	-	-	-	-



DEMAG AC 100

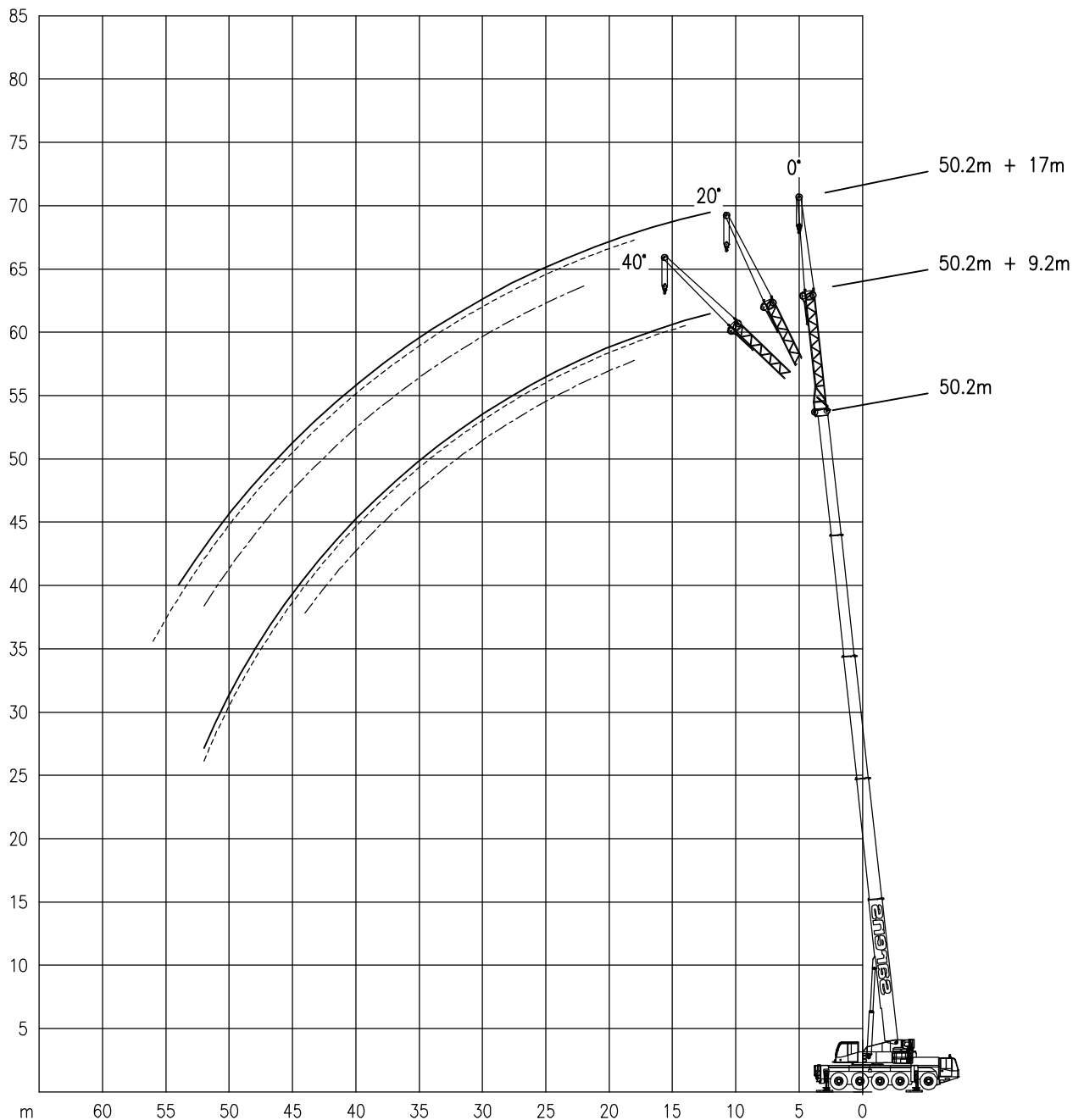
Working ranges of folding jib
Portées de la fléchette pliante

100/110 TON

Arbeitsbereiche mit Klappspitze
Werkbereik van de klappjib

HaV

1/500





DEMAG AC 100

100/110 TON

Lifting capacities at folding jib
Capacités à la fléchette pliante

Tragfähigkeiten an der Klappspitze
Capaciteiten aan de klappjib

7.1 m x 7 m 25 t **HoV** 360° **DIN/ISO 75 %**

Main Boom Portée Flèche pr. Hauptausl. Hoofdgiek	Radius Portée Auslad. Radius	Folding jib - Fléchette pliante - Klappspitze - Klappjib						Main Boom Flèche pr. Hauptausl. Hoofdgiek	Radius Portée Auslad. Radius	Folding jib - Fléchette pliante - Klappspitze - Klappjib												
		9.2 m			17 m					9.2 m			17 m									
		0°	20°	40°	0°	20°	40°			0°	20°	40°	0°	20°	40°							
38m	m	t	t	t	t	t	t	m	t	t	t	t	t	t	t	t	t	t	t	t	t	t
	7	14.4	-	-	-	-	-	9	10	-	-	-	-	-	-	-	-	-	-	-	-	-
	8	14.2	-	-	-	8.1	-	-	10	9.5	-	-	-	6.4	-	-	-	-	-	-	-	-
	9	13.7	-	-	-	7.8	-	-	12	8.6	-	-	-	6.1	-	-	-	-	-	-	-	-
	10	13.1	9.3	-	-	7.5	-	-	14	7.8	6.6	-	-	5.7	-	-	-	-	-	-	-	-
	12	12.2	8.9	-	-	7	-	-	16	7.2	6.2	5.7	-	5.4	4.3	-	-	-	-	-	-	-
	14	11.3	8.6	7.1	-	6.5	4.8	-	18	6.6	5.8	5.4	-	5.1	4.1	-	-	-	-	-	-	-
	16	10.4	8.3	7	-	6.0	4.6	-	20	6.2	5.4	5.2	-	4.8	3.9	-	-	-	-	-	-	-
	18	9.7	8	6.8	-	5.6	4.3	3.6	22	5.8	5.1	4.9	-	4.6	3.8	3.2	-	-	-	-	-	-
	20	9	7.7	6.6	-	5.3	4.1	3.5	24	5.4	4.9	4.7	-	4.3	3.6	3.1	-	-	-	-	-	-
	22	8.3	7.5	6.5	-	5	3.9	3.4	26	5.1	4.6	4.5	-	4	3.4	3	-	-	-	-	-	-
	24	7.7	7.1	6.4	-	4.7	3.7	3.3	28	4.9	4.4	4.3	-	3.8	3.3	3	-	-	-	-	-	-
	26	6.6	6.8	6.3	-	4.4	3.6	3.2	30	4.6	4.2	4.1	-	3.6	3.1	2.9	-	-	-	-	-	-
	28	5.7	6.1	6.2	-	4.2	3.4	3.1	32	4.4	4	3.9	-	3.4	3	2.8	-	-	-	-	-	-
	30	4.9	5.2	5.5	-	4	3.3	3	34	4.2	3.9	3.8	-	3.2	2.8	2.7	-	-	-	-	-	-
	32	4.4	4.5	4.7	-	3.8	3.2	3	36	3.8	3.8	3.6	-	3	2.7	2.6	-	-	-	-	-	-
	34	4.2	3.9	4	-	3.6	3.1	2.9	38	3.3	3.5	3.5	-	2.8	2.6	2.5	-	-	-	-	-	-
	36	3.9	3.7	-	-	3.5	3.1	2.9	40	2.9	3.1	3.2	-	2.7	2.5	2.4	-	-	-	-	-	-
	38	3.7	3.6	-	-	3	3	2.9	42	2.5	2.7	-	-	2.6	2.3	2.3	-	-	-	-	-	-
	40	3.3	3.4	-	-	2.6	3	2.9	44	2.2	2.3	-	-	2.4	2.3	2.2	-	-	-	-	-	-
42	3	3	-	-	2.4	2.5	2.7	46	1.9	2	-	-	2.1	2.2	2.1	-	-	-	-	-	-	
44	-	-	-	-	2.3	2.2	-	48	1.7	1.7	-	-	1.8	2.1	2.1	-	-	-	-	-	-	
46	-	-	-	-	2.2	2.1	-	50	-	-	-	-	1.6	1.8	-	-	-	-	-	-	-	
48	-	-	-	-	2.1	2.1	-	52	-	-	-	-	1.3	1.5	-	-	-	-	-	-	-	
50	-	-	-	-	2	2	-	54	-	-	-	-	1.1	1.3	-	-	-	-	-	-	-	
52	-	-	-	-	1.7	1.8	-	56	-	-	-	-	1	1.1	-	-	-	-	-	-	-	
40.8m	8	10.8	-	-	-	-	-	10	10.3	-	-	-	-	-	-	-	-	-	-	-	-	
	9	10.2	-	-	-	6.9	-	-	12	9.4	-	-	-	6.2	-	-	-	-	-	-	-	
	10	9.7	-	-	-	6.6	-	-	14	8.7	7.1	-	-	5.8	-	-	-	-	-	-	-	
	12	8.7	7.3	-	-	6.2	-	-	16	8.1	6.8	6.1	-	5.5	-	-	-	-	-	-	-	
	14	7.9	6.8	6.1	-	5.8	-	-	18	7.5	6.5	5.8	-	5.2	4.1	-	-	-	-	-	-	
	16	7.2	6.4	5.7	-	5.4	4.3	-	20	7	6.2	5.5	-	4.9	4	-	-	-	-	-	-	
	18	6.6	6	5.4	-	5	4.1	-	22	6.5	5.8	5.2	-	4.7	3.8	3.2	-	-	-	-	-	
	20	6.1	5.6	5.1	-	4.7	3.9	3.3	24	6.1	5.5	5	-	4.4	3.6	3.1	-	-	-	-	-	
	22	5.7	5.2	4.9	-	4.4	3.7	3.2	26	5.7	5.2	4.8	-	4.2	3.5	3.1	-	-	-	-	-	
	24	5.3	4.9	4.7	-	4.1	3.5	3.2	28	5.4	5	4.6	-	4	3.3	3	-	-	-	-	-	
	26	5	4.6	4.5	-	3.9	3.4	3.1	30	5.1	4.7	4.4	-	3.8	3.2	3	-	-	-	-	-	
	28	4.7	4.4	4.3	-	3.6	3.2	3	32	4.6	4.5	4.2	-	3.6	3	2.9	-	-	-	-	-	
	30	4.4	4.1	4.1	-	3.4	3	2.9	34	4	4.2	4.1	-	3.5	2.9	2.9	-	-	-	-	-	
	32	4.2	3.9	3.9	-	3.2	2.9	2.8	36	3.4	3.7	3.9	-	3.3	2.8	2.8	-	-	-	-	-	
34	4	3.7	3.7	-	3	2.7	2.7	38	3	3.2	3.3	-	3.2	2.7	2.7	-	-	-	-	-		
36	3.8	3.6	3.6	-	2.8	2.6	2.5	40	2.6	2.8	2.9	-	2.8	2.6	2.6	-	-	-	-	-		
38	3.6	3.4	3.5	-	2.6	2.5	2.4	42	2.2	2.4	2.5	-	2.4	2.6	2.5	-	-	-	-	-		
40	3.3	3.3	-	-	2.5	2.4	2.4	44	1.9	2	-	-	2.1	2.4	2.5	-	-	-	-	-		
42	2.9	3	-	-	2.4	2.3	2.3	46	1.6	1.7	-	-	1.8	2.1	2.3	-	-	-	-	-		
44	2.6	2.7	-	-	2.3	2.2	2.2	48	1.3	1.4	-	-	1.5	1.8	1.9	-	-	-	-	-		
46	-	-	-	-	2.2	2.1	-	50	1.1	1.1	-	-	1.3	1.5	-	-	-	-	-	-		
48	-	-	-	-	2	2	-	52	-	-	-	-	1	1.2	-	-	-	-	-	-		
50	-	-	-	-	1.7	1.8	-	54	-	-	-	-	0.8	1	-	-	-	-	-	-		
52	-	-	-	-	1.7	1.8	-	56	-	-	-	-	0.6	0.8	-	-	-	-	-	-		
42.2m	9	11.7	-	-	-	7.2	-	12	8.4	-	-	-	5.6	-	-	-	-	-	-	-		
	10	11.3	-	-	-	7	-	14	7.9	6.9	-	-	5.4	-	-	-	-	-	-	-		
	12	10.7	8.8	-	-	6.5	-	-	16	7.5	6.4	-	-	5.2	-	-	-	-	-	-		
	14	10	8.4	7.1	-	6.1	-	-	18	7.1	6.1	5.5	-	5	4.1	-	-	-	-	-		
	16	9.3	8.1	6.9	-	5.7	4.5	-	20	6.7	5.7	5.2	-	4.8	3.9	-	-	-	-	-		
	18	8.7	7.8	6.7	-	5.3	4.3	-	22	6.3	5.4	5	-	4.6	3.8	3.2	-	-	-	-		
	20	8.1	7.5	6.5	-	5	4.1	3.4	24	6	5.2	4.8	-	4.4	3.6	3.1	-	-	-	-		
	22	7.5	7.2	6.4	-	4.7	3.9	3.3	26	5.7	4.9	4.6	-	4.2	3.4	3	-	-	-	-		
	24	7	6.9	6.2	-	4.5	3.7	3.2	28	5.4	4.7	4.4	-	4	3.3	2.9	-	-	-	-		
	26	6.5	6.6	6	-	4.2	3.6	3.1	30	5	4.5	4.2	-	3.8	3.1	2.9	-	-	-	-		
	28	5.9	6.2	5.9	-	4	3.4	3.1	32	4.5	4.3	4.1	-	3.6	3	2.8	-	-	-	-		
	30	5.1	5.5	5.7	-	3.8	3.3	3.0	34	3.9	4.1	4	-	3.4	2.9	2.7	-	-	-	-		
	32	4.6	4.7	4.9	-	3.7	3.2	2.9	36	3.4	3.7	3.8	-	3.2	2.8	2.7	-	-	-	-		
	34	4.3	4.1	4.3	-	3.5	3.1	2.9	38	2.9	3.2	3.3	-	3	2.7	2.6	-	-	-	-		
36	3.8	3.9	3.9	-	3.4	3.1	2.8	40	2.5	2.7	2.9	-	2.7	2.6	2.5	-	-	-	-			
38	3.3	3.5	3.6	-	3.1	3.1	2.8	42	2.1	2.3	2.5	-	2.3	2.5	2.5	-	-	-	-			
40	2.9	3.1	-	-	2.8	3.1	2.8	44	1.8	2	2.1	-	2	2.4	2.4	-	-	-	-			
42	2.6	2.7	-	-	2.7	2.7	2.8	46	1.5	1.7	-	-	1.7	2	2.3	-	-	-	-			
44	2.2	2.3	-	-	2.4	2.5	2.5	48	1.2	1.4	-	-	1.4	1.7	1.9	-	-	-	-			
46	1.9	2	-	-	2.1	2.4	2.4	50	1	1.1	-	-	1.2	1.4	1.6	-	-	-				



DEMAG AC 100

100/110 TON

Lifting capacities at folding jib
Capacités à la fléchette pliante

Tragfähigkeiten an der Klappspitze
Capaciteiten aan de klappjib

7.1 m x 7 m 13.3 t **HaV** 360° **DIN/ISO 75 %**

Main Boom Portée pr. Hauptausl. Hoofdgiek	Radius Portée Auslad. Radius	Folding jib – Fléchette pliante – Klappspitze – Klappjib						Main Boom Flèche pr. Hauptausl. Hoofdgiek	Radius Portée Auslad. Radius	Folding jib – Fléchette pliante – Klappspitze – Klappjib							
		9.2 m			17 m					9.2 m			17 m				
		0°	20°	40°	0°	20°	40°			0°	20°	40°	0°	20°	40°		
38m	7	14.4	-	-	-	-	-	45 m	9	10	-	-	-	-	-	-	
	8	14.2	-	-	8.1	-	-		10	9.5	-	-	6.4	-	-	-	-
	9	13.7	-	-	7.8	-	-		12	8.6	-	-	6.1	-	-	-	-
	10	13.1	9.3	-	7.5	-	-		14	7.8	6.6	-	5.7	-	-	-	-
	12	12.2	8.9	-	7	-	-		16	7.2	6.2	5.7	5.4	4.3	-	-	-
	14	11.3	8.6	7.1	6.5	4.8	-		18	6.6	5.8	5.4	5.1	4.1	-	-	-
	16	10	8.3	7	6	4.6	-		20	6.2	5.4	5.2	4.8	3.9	-	-	-
	18	8.3	8	6.8	5.6	4.3	3.6		22	5.8	5.1	4.9	4.6	3.8	3.2	-	-
	20	6.8	7.5	6.6	5.3	4.1	3.5		24	5.3	4.9	4.7	4.3	3.6	3.1	-	-
	22	5.9	6.2	6.5	5	3.9	3.4		26	4.4	4.6	4.5	4	3.4	3	-	-
	24	5.6	5.1	5.5	4.7	3.7	3.3		28	3.7	4.1	4.3	3.8	3.3	3	-	-
	26	4.9	4.7	4.6	4.1	3.6	3.2		30	3.1	3.4	3.7	3.3	3.1	2.9	-	-
	28	4.1	4.4	4.4	3.7	3.4	3.1		32	2.6	2.9	3.1	2.8	3	2.8	-	-
	30	3.5	3.8	4	3.4	3.3	3		34	2.1	2.4	2.5	2.3	2.8	2.7	-	-
	32	3	3.2	3.4	3.2	2.9	3		36	1.7	1.9	2.1	1.9	2.4	2.6	-	-
	34	2.5	2.7	2.8	2.8	2.8	2.8		38	1.3	1.5	1.7	1.6	2	2.3	-	-
	36	2.1	2.3	-	2.4	2.7	2.7		40	1	1.2	1.3	1.2	1.6	1.9	-	-
	38	1.8	1.9	-	2	2.4	2.6		42	0.7	0.9	-	1	1.3	1.6	-	-
	40	1.4	1.6	-	1.7	2	2.2		44	-	0.6	-	0.7	1	1.2	-	-
	42	1.2	1.2	-	1.4	1.7	1.8		46	-	-	-	-	0.8	0.9	-	-
44	-	-	-	1.1	1.4	-	48	-	-	-	-	-	0.7	-	-		
46	-	-	-	0.9	1.1	-		10	10.3	-	-	-	-	-	-	-	
48	-	-	-	0.7	0.9	-		12	9.4	-	-	6.2	-	-	-	-	
50	-	-	-	-	0.6	-		14	8.7	7.1	-	5.8	-	-	-	-	
40.8m	8	10.8	-	-	-	-	46.4m	16	8.1	6.8	6.1	5.5	-	-	-	-	
	9	10.2	-	-	6.9	-		18	7.5	6.5	5.8	5.2	4.1	-	-	-	
	10	9.7	-	-	6.6	-		20	7	6.2	5.5	4.9	4	-	-	-	
	12	8.7	7.3	-	6.2	-		22	5.9	5.8	5.2	4.7	3.8	3.2	-	-	
	14	7.9	6.8	6.1	5.8	-		24	4.9	5.4	5	4.4	3.6	3.1	-	-	
	16	7.2	6.4	5.7	5.4	4.3		26	4.1	4.5	4.8	4.2	3.5	3.1	-	-	
	18	6.6	6	5.4	5	4.1		28	3.3	3.8	4.1	3.5	3.3	3	-	-	
	20	6.1	5.6	5.1	4.7	3.9		30	2.7	3.1	3.4	2.9	3.2	3	-	-	
	22	5.7	5.2	4.9	4.4	3.7		32	2.2	2.5	2.8	2.4	3	2.9	-	-	
	24	5.3	4.9	4.7	4.1	3.5		34	1.7	2	2.2	2	2.6	2.9	-	-	
	26	4.9	4.6	4.5	3.9	3.4		36	1.3	1.6	1.8	1.6	2.1	2.5	-	-	
	28	4.1	4.4	4.3	3.6	3.2		38	1	1.2	1.4	1.2	1.7	2.1	-	-	
	30	3.5	3.8	4	3.4	3		40	0.7	0.9	1	0.9	1.4	1.7	-	-	
	32	3	3.2	3.4	3.2	2.9		2.8	42	-	-	0.7	0.6	1	1.3	-	-
	34	2.5	2.7	2.9	2.7	2.7		2.7	44	-	-	-	-	0.7	1	-	-
	36	2.1	2.3	2.4	2.3	2.6		2.5	46	-	-	-	-	-	0.7	-	-
	38	1.7	1.9	2	1.9	2.3		2.4		12	8.4	-	-	5.6	-	-	-
	40	1.4	1.6	-	1.6	2		2.2		14	7.9	6.9	-	5.4	-	-	-
	42	1.1	1.3	-	1.3	1.6		1.8		16	7.5	6.4	-	5.2	-	-	-
	44	0.9	1	-	1.1	1.3		1.5		18	7.1	6.1	5.5	5	4.1	-	-
46	-	-	-	0.9	1.1	-		20	6.7	5.7	5.2	4.8	3.9	-	-		
48	-	-	-	0.7	0.8	-		22	5.6	5.4	5	4.6	3.8	3.2	-		
50	-	-	-	-	0.6	-		24	4.7	5.2	4.8	4.4	3.6	3.1	-		
42.2m	9	11.7	-	-	7.2	-	50.2m	26	3.8	4.3	4.6	3.9	3.4	3	-	-	
	10	11.3	-	-	7	-		28	3.2	3.6	3.9	3.3	3.3	2.9	-	-	
	12	10.7	8.8	-	6.5	-		30	2.6	3	3.3	2.7	3.1	2.9	-	-	
	14	10	8.4	7.1	6.1	-		32	2.1	2.5	2.7	2.2	2.9	2.8	-	-	
	16	9.3	8.1	6.9	5.7	4.5		34	1.7	2	2.2	1.8	2.4	2.7	-	-	
	18	8.3	7.8	6.7	5.3	4.3		36	1.3	1.6	1.8	1.4	2	2.4	-	-	
	20	7	7.5	6.5	5	4.1		3.4	38	0.9	1.2	1.3	1.1	1.6	2	-	-
	22	6.2	6.4	6.4	4.7	3.9		3.3	40	0.6	0.8	1	0.8	1.3	1.6	-	-
	24	5.3	5.3	5.7	4.5	3.7		3.2	42	-	-	0.7	-	1	1.3	-	-
	26	4.5	4.9	4.7	4.2	3.6		3.1	44	-	-	-	-	0.7	0.9	-	-
	28	3.7	4.1	4.4	3.9	3.4		3.1	46	-	-	-	-	-	0.6	-	-
	30	3.1	3.4	3.7	3.4	3.3		3									
	32	2.6	2.9	3	2.8	3.1		2.9									
	34	2.1	2.4	2.5	2.4	2.9		2.9									
	36	1.7	1.9	2	2	2.4		2.8									
	38	1.3	1.5	1.6	1.6	2		2.3									
	40	1	1.2	-	1.3	1.7		1.9									
	42	0.8	0.9	-	1	1.3		1.6									
	44	-	0.6	-	0.7	1		1.2									
	46	-	-	-	-	0.8		0.9									
48	-	-	-	-	-	-											
50	-	-	-	-	-	-											



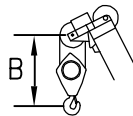
DEMAG AC 100

100/110 TON

Working speeds
Vitesses de travail

Arbeitsgeschwindigkeiten
Werksnelheden

Mechanisms Mécanismes Antriebe Aandrijvingen	Speeds Vitesses Geschwindigkeiten Snelheden	Rope diameter Diamètre du câble Seildurchmesser Kabeldiameter	Single line pull Effort sur brin simple Zulässiger Seilzug je Strang Toegelaten trekkracht per part	Length of ropes Longueur des câbles Länge der Seile Kabellengte
Main hoist Levage sur flèche Hubwerk 1 Hijlsier 1	60–110m/min	21 mm	72 kN	240 m
Auxiliary hoist Levage sur fléchette Hubwerk 2 Hijlsier 2	60–110 m/min	21 mm	72 kN	240 m
Slewing gear Orientation Drehwerk Zwenkwerk	0 – 1,7 RPM 0 – 1,7 t/min 0 – 1,7U/min 0 – 1,7 tpm			
Travel speed Vitesse sur route Fahrgeschwindigkeit Rijsnelheid	85 km/h			
Booming up Relever la flèche Aufwippen Optoppen	-1.8° – +82° -1.8° – +82° -1.8° – +82° -1.8° – +82°	55s		
Telescope Téléscoper Teleskopieren Telescoperen	12.5 – 50.2m	300s		



Hook block/Crane hook
Crochet mouflé/Crochet simple

Unterflasche/Hakengehänge
Kraanblok/Kraanhaak

Capacity Capacité Tragfähigkeit Capaciteit	Number of sheaves Nombre de poulies Anzahl der Rollen Aantal schijven	Number of lines Nombre de brins Strangzahl Aantal parten	Weight Poids Gewicht Gewicht	"B"
SWL 63 t	3	7	700 kg	1.9 m
SWL 32 t	1	3	550 kg	1.8 m